

---

## Keep safe

Trimming trees near power lines can be extremely hazardous and should not be underestimated. We recommend you hire professionals with the necessary expertise and safety procedures to competently carry out tree trimming. If you need to remove or prune trees near overhead lines, please contact us and we'll refer you to an experienced contractor.

## Trim early

Keep branches and vegetation at least 1.5 metres away from low voltage lines or at least 4 metres from high voltage lines. As a tree owner you may be liable for any damage caused by carrying out trimming or felling of trees. If you intend to work within 4 metres of overhead power lines, please go to our website [oriongroup.co.nz](http://oriongroup.co.nz) to request a free close approach consent before you start.

## Replace or cut down

One of the best things a tree owner can do to reduce the risk caused by trees near power lines is to think carefully before planting. Be mindful of the ongoing maintenance required to ensure that trees remain clear of power lines. Fast growing species such as Willows, Eucalyptus, Poplar, Acacia and Prunus to name a few, cause problems as they can easily grow 2 – 3 metres or more in a growing season. The only way fast growing species can be managed is by either cutting them twice a year, cutting them a greater distance from the power lines or having them completely removed. The natural shedding of bark and/or branches by certain species of trees also causes undue risk to power lines.

If you have any doubts about the management of your trees, please contact us on **03 363 9898** or **0800 363 9898** or visit the Safety section of our website [oriongroup.co.nz](http://oriongroup.co.nz).

---

# Trees and power lines

Power lines are an important part of our everyday lives, bringing electricity to our homes and businesses.

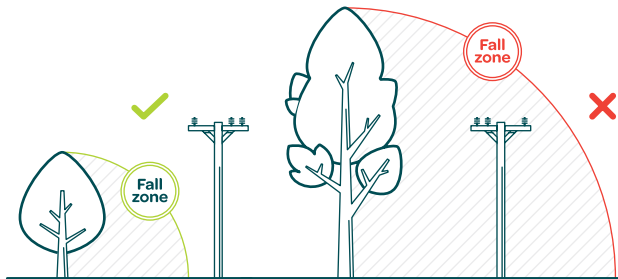


**Orion**

Trees need to be pruned to keep branches and vegetation away from overhead power lines. If trees aren't managed, it can result in power outages. It can also cause vegetation touching lines to become electrically "live" heightening the risk of electrocution to anyone coming into contact with it. Branches touching lines can also start fires.

## Your responsibilities

As a tree owner you are responsible for looking after your trees. The Electricity (Hazards from Trees) Regulations 2003 provides guidance on the tree owner's responsibility. You are liable for any damage to the electricity network if your trees damage any lines or equipment. The word "trees" includes all types of vegetation including shrubs, hedges and climbing vines.



Tree owners of tall 'fall distance' trees that are not covered by the regulations are potentially liable for any damage caused to lines or associated electricity network equipment, including any damages that may be claimed by affected third parties.

## How we manage trees near power lines

Orion's tree management programme is largely governed by the Electricity (Hazards from Trees) Regulations 2003 and involves the monitoring and pruning or removal of trees that threaten to come into contact with power lines. Through this programme we work with tree owners to minimise the risk of their trees touching power lines. We are responsible for the first cut of trees near power lines, where the first cut is on a property basis.

We undertake periodic pruning of trees within the notice zone. The intent of this pruning is to support safety and reduce the risk of power outages. The pruning by us does not remove the tree owner's responsibilities and in the case of fast growing species may not be sufficient to ensure that trees remain outside of the growth limit zone. You will be notified prior to any periodic pruning being carried out and the work will be completed by arborists carrying Orion identification.

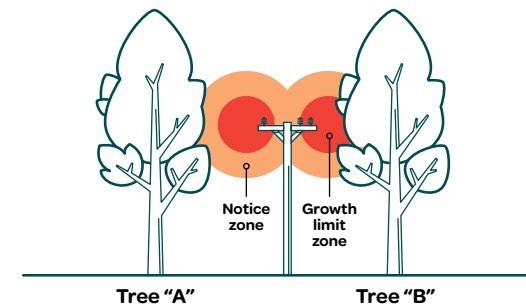
## Maintaining clearance zones around power lines

It is a legal requirement that electricity network operators and occupiers of private property maintain safe clearance distances between vegetation and power lines.

A clearance zone is the minimum safe distance between vegetation and power lines. It allows the power lines to safely swing in windy conditions without being damaged or starting fires. For the distances required between trees and power lines, please see our Zones diagram below.

If we become aware of a tree which is within the 'Notice zone' (see Tree "A" in the diagram below) we are required to issue the tree owner with a Hazard Warning notice. For trees within the 'Growth limit zone' (see Tree "B" in the diagram below) we are required to issue the tree owner with a Cut or Trim notice.

### Zones



Overhead line	Notice zone	Growth limit zone
66,000 volts (high voltage)	5.0 metres	4.0 metres
33,000 volts (high voltage)	3.5 metres	2.5 metres
11,000 volts (high voltage)	2.6 metres	1.6 metres
400V/230V (low voltage)	1.5 metres	0.5 metres

#### Note:

- 1) These distances are from the power line, not the power pole
- 2) These distances are a minimum and apply in all conditions including high wind or snow
- 3) In most instances the power lines that go to a house or building are low voltage power lines. Power lines that go down a street may be low or high voltage.

If you see a tree touching power lines and sparking, or another hazardous tree condition, please contact Orion immediately on **03 363 9898** or **0800 363 9898**.